



Jill Wade DDS | Kristi Moody DDS | Dennis Abbott DDS
 3880 Parkwood Blvd, Suite 103
 Frisco, Texas 75034

STONEBRIAR
 SMILE DESIGN



972.377.7800
 stonebriarsmiledesign.com

Chocolate Peanut Butter Fudge

Ingredients

- 4 oz. unsweetened baking chocolate
- 1 cup natural-style peanut butter
- ¾ cup xylitol sugar substitute
- 1 tablespoon artificial sweetener
- ½ cup half-and-half cream
- 1 teaspoon vanilla extract



Instructions

- Melt the baking chocolate in a double boiler over medium heat.
- Add xylitol and half & half, and stir to blend well.
- Heat the mixture, stirring occasionally, until dissolved, smooth, and very hot (no need to boil).
- Remove from heat and stir in peanut butter and vanilla.
- Press mixture into a flat container that gives the desired height for your fudge. I use a fairly small container so that when I slice the fudge, pieces will be square.
- Chill until firm, then cut into 16 pieces. Store in refrigerator.



The mouth is the window to your health and we are committed to educate you.

You are your own best healthcare advocate. Let us lead the way to Simplify Your Health.

SimplifiHealth.com

SPRING 2020



STONEBRIAR
 SMILE DESIGN



20 Years of Five-Star Care for My Family

"Our family is blessed to have found the right dental team over 20 years ago. We have first hand experienced Stonebriar Smile Design's commitment to five-star patient care!" -Kathy F.

Mouth Health Matters

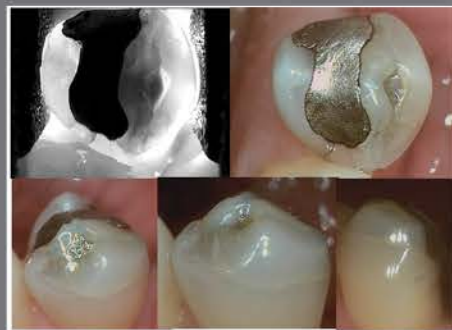
Did you know that 95% of people with diabetes also have periodontal disease? There are a total of 29.1 million people with diabetes in the United States and 1 in 4 do not know why they have it. People with periodontal disease have more difficulty controlling their blood sugar levels. Treating gum disease in conjunction with a physician's treatment is essential with any patient that has diabetes. If you have recently been diagnosed with diabetes or are overdue for your oral health evaluation, please contact us for an appointment. Your mouth health matters.

  @stonebriarsmiledesign

FOLLOW US ON SOCIAL MEDIA FOR UPDATES & SPECIAL ANNOUNCEMENTS

SUB-ENAMEL ILLUMINATION

Stonebriar Smile Design strives to offer the most advanced technology to better serve our patients. The LUM's specialized LED technology applies a high-intensity light source to the tooth with unique positioning so that the light is traveling perpendicular to the plane of the tooth. In a tooth without impurities the light will travel uninterrupted. When a tooth has impurities such as fractures or leaking amalgams, the light is dispersed showing up clearly in near X-ray like images. Treatment recommendations can then be made accordingly.



Welcome Back Teresa!

We are extremely happy to welcome back Teresa and are so grateful for the experience she brings to the team. Her sweet smile, friendly voice and caring, funny attitude brightens our day and I know it will yours too.



Dear Friends,

The new decade has begun! 2020 appears to have many adventures in store for us all. I can't believe how fast it has taken off. It seems like just yesterday that the twins and I were in Montana skiing Big Sky during the holidays. Maybe it is because much of our time is full with participating in swim, club volleyball, piano, drums, and of course all of the fifth-grade school activities. We will have a chance to slow down a smidge since Rachel just broke her wrist and will be taking a 6-8 week break. Yet, we feel blessed this is really our first major injury.



For those of you that remember my niece, Trisha, that worked for years at my office as my assistant and then a hygienist, she moved to Montana and just got engaged! We are so thrilled for her and the twins are excited to be flower girls in her upcoming wedding.

Many of our patients have been with us for close to 20 years. It has truly been an honor to be a part of the many phases of life and watch kids grow up in front of our eyes, graduate, get married and have a family of their own. Thank you for your trust and confidence throughout the years and for choosing our team for your dental care.



SYMPLIFIHEALTH



I whole-heartedly believe in prevention and in the continual maintenance to look and feel great. Radiating confidence is what it is all about this decade for me! Be sure to follow us on Facebook and Instagram for the most up-to-date information on the office, new services and promotions. You won't want to miss out! Also, listen in on our SympliciHealth™ Podcast for topics that bridge the gap between medicine and dentistry.

Let's just say a big, milestone birthday is coming up for me soon...so anti-aging and cosmetics have been on my mind. I recently started my third-round of orthodontics last week. Why, you ask? With age my smile has experienced subtle changes and my arch started to collapse. The narrowing of an arch can add years to the face. So rather than wait any longer, I am choosing to turn the clock back now. Invisalign is an affordable and practical approach to broaden arches and straighten misaligned teeth, for a more youthful appearance.



This summer we plan on some office remodeling, a physical facelift! If you are feeling the same need for yourself... schedule a cosmetic consult. We would love the opportunity to discuss the many rejuvenating services available to enhance your smile and face. Join me in bringing back the JOY!

Keep smiling from the inside out!
Dr. Jill Wade

ACTUAL PATIENT



WHAT DOES COSMETIC DENTISTRY MEAN TO YOU?

At Stonebriar Smile Design we can take a magic wand and design a smile that you may not have been born with. This can include changing the color, shape, length, or arrangement (correct crowding) all at the same time or with individual procedures. Our goal is to create a smile you love. Dr. Wade and Dr. Moody have years of training and experience transforming smiles that change lives. With the latest techniques and materials, cosmetic veneers and crowns can stand the test of time.

A few tips and ideas:

- Retain the arch form with nightly wear of retainers or nightguard combination. This helps keep your face supported as gravity pulls everything down and forward. It also protects your teeth from additional wear which can make your teeth look shorter.
- Restore cracked teeth before they break. Statistically our first molars, that we have had from age 6, are the first teeth to break. Correcting a problem early can be less invasive and less costly.
- Teeth whitening is an easy and quick method for a more youthful look. A pop of brighter color is dynamic and radiates confidence. If you have not professionally whitened in the last two years, mention this newsletter and we will take \$50 off your in-office procedure.

SCHEDULE A COMPLIMENTARY COSMETIC CONSULT AND VIEW A DIGITALLY IMAGED PHOTO OF YOUR ENHANCED, NEW SMILE!



We are so grateful for our team of talented professionals!